

**CHANGE ORDER NUMBER - 1**

Project: <b>Veterans Memorial Complex Parking Lot Improvements</b> Owner: <b>Brick Township Board of Education</b> Contractor: <b>C.J. Hesse, Inc.</b> <b>25 1st Avenue, Atlantic Highlands, NJ 07716</b>	Change Oder No.: <b>1</b>  Change Order Date: <b>7/25/2017</b>
--	--

**The following are changes in the contract. Location and Reason for Change Order:**

**Reason:** The existing electrical handhole shown on the contract drawings was to be abandoned since it was part of the existing lighting circuit for the parking lot that was no longer required. The contractor's electrician found that the source of the existing wiring inside could not be verified. With no record drawings or information from the school regarding the existing wiring, it was determined that the handhole could not be abandoned. However, the existing structure was not traffic rated and therefore needs to be reconstructed. A new structure was designed to span the existing structure and this was utilized as the new connection point. A proposed handhole was eliminated and the existing handhole did not need to be removed providing some credits. See the attached revised contract drawings with scope changes.

Item No.	Description	(+/-)	Quantity	Units	Unit Price	Amount
<b>Additional Quantities - Electrical Handhole</b>						
COI	Credit for existitng structure to remain in place (not required to be removed) & Elimination of Proposed electrical Handhole From Scope	-	1	LS	\$ (1,248.00)	\$ (1,248.00)
	Furnish and Install New Concrete Structure, Frame and Grate	+	1	LS	\$ 6,923.70	\$ 6,923.70
						\$ -
						\$ -
						\$ -
	<b>Extra Subtotal</b>					\$ 5,675.70

<b>Total</b>	<b>\$ 5,675.70</b>
--------------	--------------------

<u>Accepted:</u>	Extra	\$ 5,675.70
	Reduction	\$ -
	<b>Total Change</b>	<b>\$ 5,675.70</b>

\_\_\_\_\_  
C.J. Hesse, Inc. (Date)

<u>Approval Recommended:</u>	Amount of Original Contract	\$ 687,213.12
	Amount of Change Order 1	\$ 5,675.70

_____ CHA Consulting, Inc. (Date)	Adjusted Contract Amount	\$ 692,888.82
--------------------------------------	--------------------------	---------------

<u>Approved:</u>	%Change in Contract	0.82%
	[(+) Increase or (-) Decrease)	

\_\_\_\_\_  
Brick Township Board of Education (Date) **8/2/17**



BRICK TOWNSHIP  
BOARD OF EDUCATION  
101 HENDRICKSON AVENUE  
BRICK, NJ 08724

CHRISTOPHER J. BORINSKI  
K. PROFESSIONAL ENGINEER  
LICENSE NUMBER Z406242900

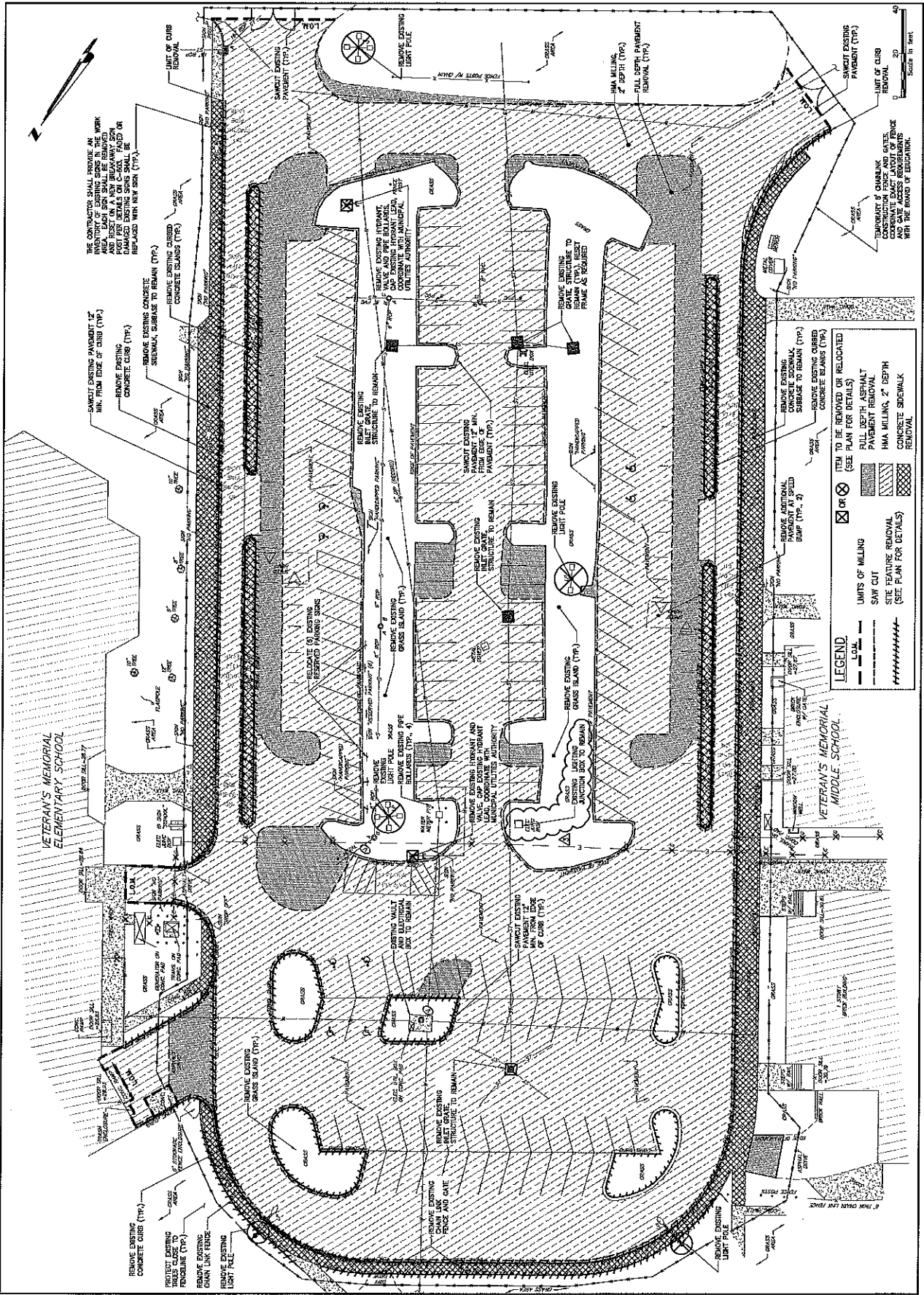
VETERANS MEMORIAL COMPLEX  
PARKING LOT IMPROVEMENTS  
BRICK TOWNSHIP  
OCEAN COUNTY, NEW JERSEY

NO.	DESCRIPTION	DATE
1	PREPARED BY	11/13/2017
2	APPROVED BY	11/13/2017
3	REVISIONS	
4	DATE	

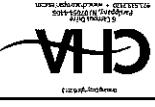
**DEMOLITION PLAN**

Designed By:	Checked By:
HAY	AC
Drawn Date:	Project No.:
09/20/2017	2017-001
Scale:	AS SHOWN

**C-101**  
SHEET 4



File: V:\Projects\17873\17873-001\17873-001.dwg, Date: 7/13/2017 11:28:58 AM, Plot: 7/13/2017 11:28:58 AM, Plotter: HP DesignJet 5000 Series, Plot Scale: 1/8\"/>



BRICK TOWNSHIP  
BOARD OF EDUCATION  
101 HENDRICKSON AVENUE  
BRICK, NJ 08724

CHRISTOPHER J. BORINSKI  
NJ PROFESSIONAL ENGINEER  
LICENSE NUMBER EA002422900

VETERANS MEMORIAL COMPLEX  
PARKING LOT IMPROVEMENTS  
BRICK TOWNSHIP  
OCEAN COUNTY, NEW JERSEY

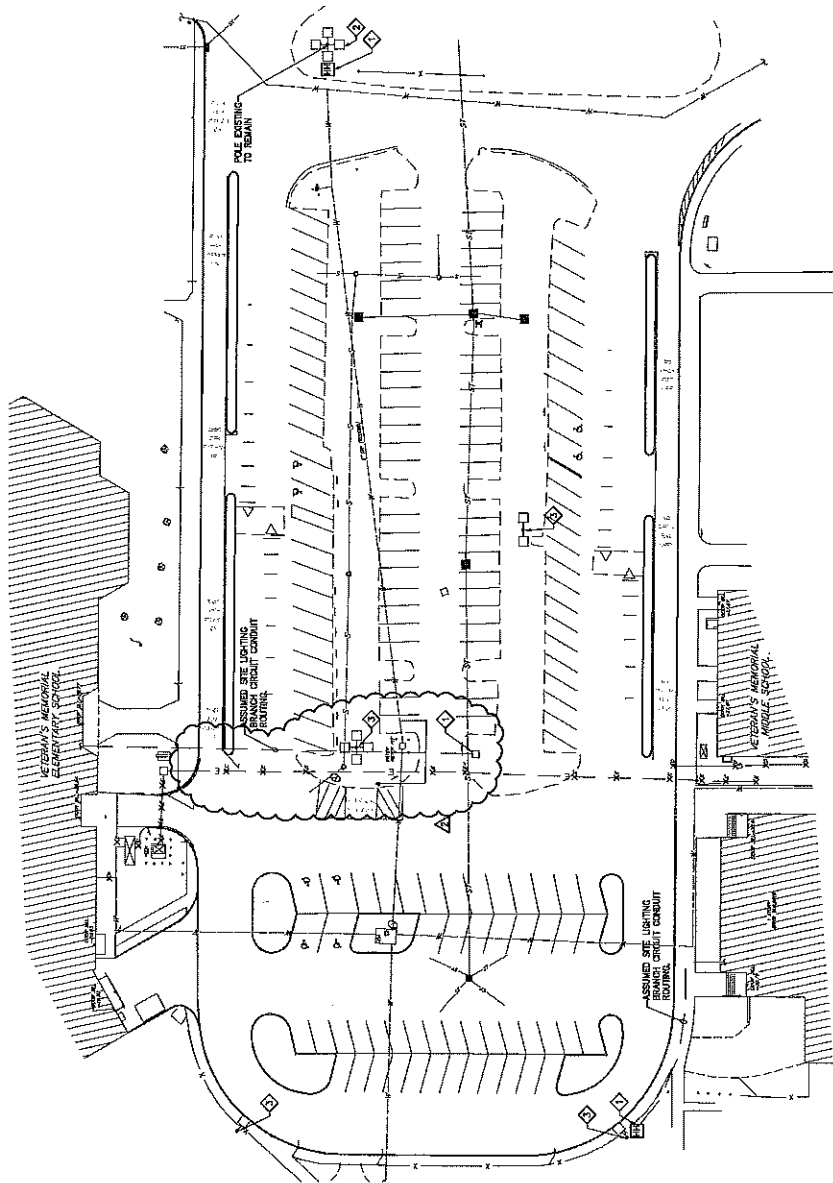
NO.	DESCRIPTION	DATE
1	PRELIMINARY	08/15/2017
2	FINAL	08/15/2017

ELECTRICAL SITE  
DEMOLITION PLAN

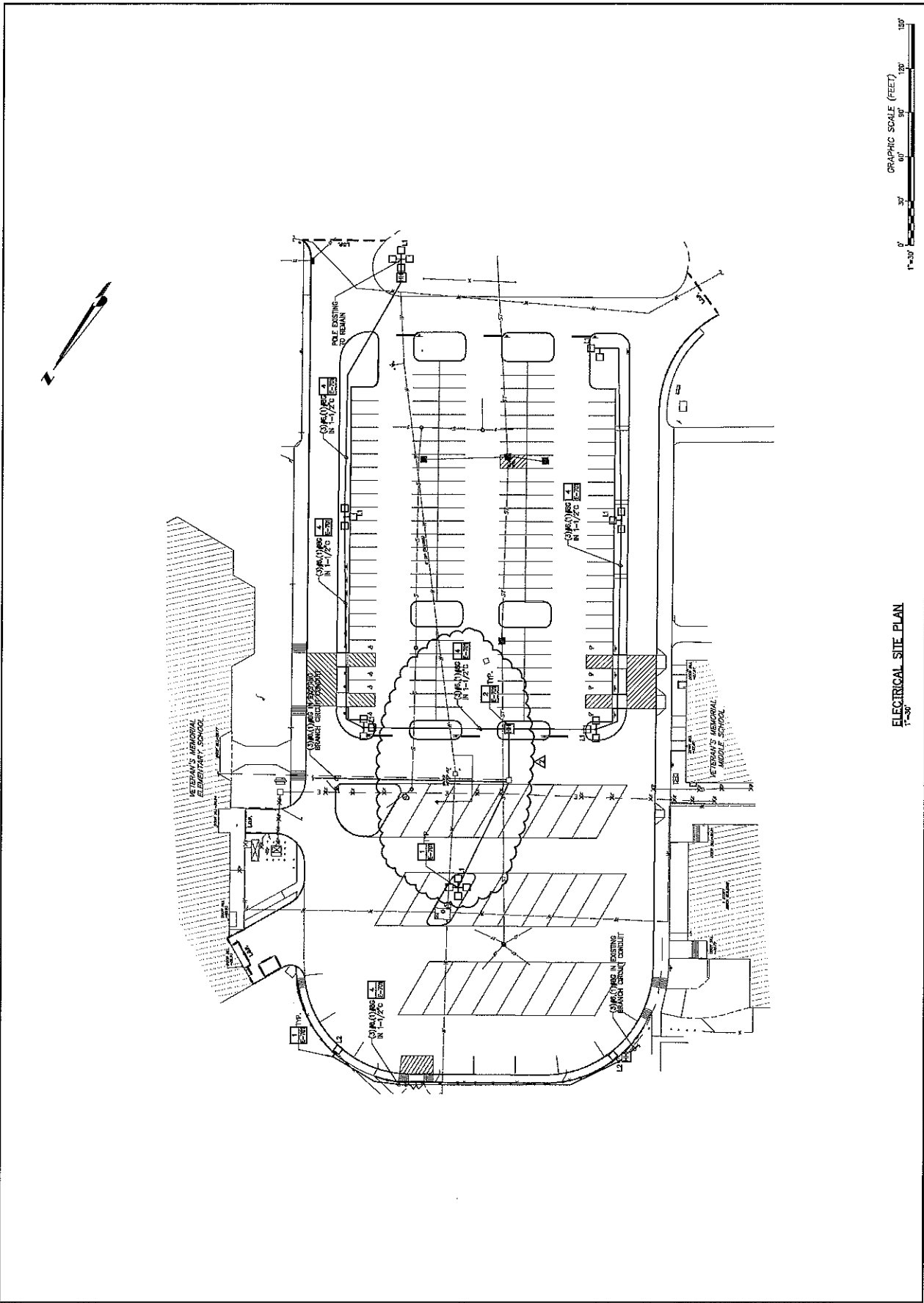
Designed By	Checked By
Drawn By	Scale
DATE	PROJECT NO.
DATE	PROJECT NO.


ED-001  
SHEET 18

- CODED NOTES**
- ◇ INTERCEPT EXISTING SITE LIGHTING BRANCH CIRCUIT AT EXISTING JUNCTION POINT AND REMOVE. BRANCH CIRCUIT WIRING BACK TO SOURCE (WIRING TO BE IN 1-1/2" DIA.)
  - ◇ REMOVE EXISTING POLE AND REMOVE BRANCH CIRCUIT WIRING AS INDICATED ON DRAWING PLAN.
  - ◇ DISCONNECT AND REMOVE COMPLETELY POLE, POLE BASE AND ASSOCIATED CONDUIT, WIRING AND LIGHT FIXTURES.



ELECTRICAL SITE DEMOLITION PLAN  
1"=30'

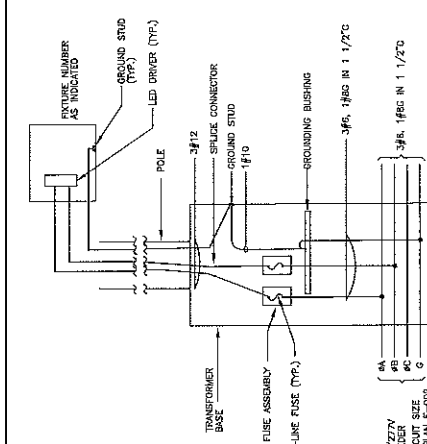


 <p>CHA CORPORATION 101 HENDRICKSON AVENUE BRICK, NJ 08724</p>	<p>BRICK TOWNSHIP BOARD OF EDUCATION 101 HENDRICKSON AVENUE BRICK, NJ 08724</p>	<p>CHRISTOPHER J. BORINSKI REGISTERED PROFESSIONAL ENGINEER LICENSE NUMBER 2462042200</p>	<p>VETERANS MEMORIAL COMPLEX PARKING LOT IMPROVEMENTS BRICK TOWNSHIP, OCEAN COUNTY, NEW JERSEY</p>	<p>ELECTRICAL SITE PLAN</p>	<p>Drawn By: JML Checked By: JML Scale: AS SHOWN Project No.: 15-000001 Sheet No.: E-002</p>
---	---	---	--	---------------------------------	--

NO.	DATE	DESCRIPTION
1	10/20/17	ISSUED FOR PERMIT
2	11/15/17	REVISED PER COMMENTS
3	12/15/17	REVISED PER COMMENTS
4	01/15/18	REVISED PER COMMENTS
5	02/15/18	REVISED PER COMMENTS
6	03/15/18	REVISED PER COMMENTS
7	04/15/18	REVISED PER COMMENTS
8	05/15/18	REVISED PER COMMENTS
9	06/15/18	REVISED PER COMMENTS
10	07/15/18	REVISED PER COMMENTS
11	08/15/18	REVISED PER COMMENTS
12	09/15/18	REVISED PER COMMENTS
13	10/15/18	REVISED PER COMMENTS
14	11/15/18	REVISED PER COMMENTS
15	12/15/18	REVISED PER COMMENTS

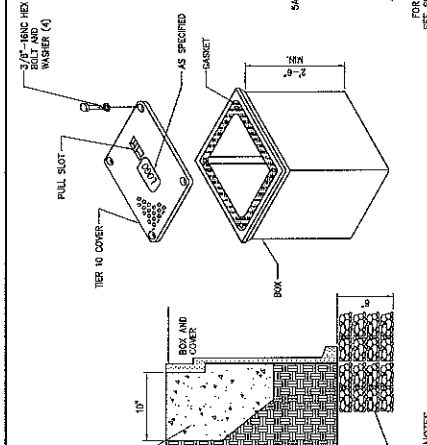
**ELECTRICAL DETAILS**

Drawn By: JDA  
 Checked By: JDA  
 Date: 10/20/17  
 Project: 17-00000  
 Scale: 1/8"=1'-0"



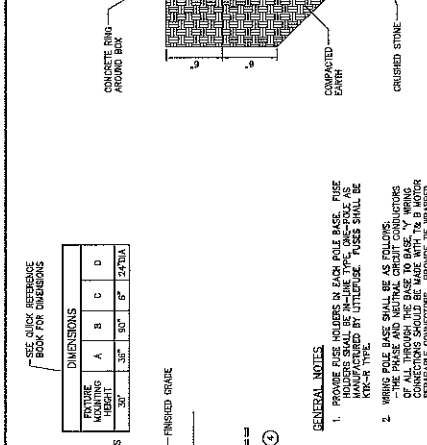
**3 LIGHTING STANDARD TYPICAL WIRING DIAGRAM**  
 NOT TO SCALE

**NOTES:**  
 1. ALTERNATE PHASE CONNECTION BETWEEN EACH POLE.



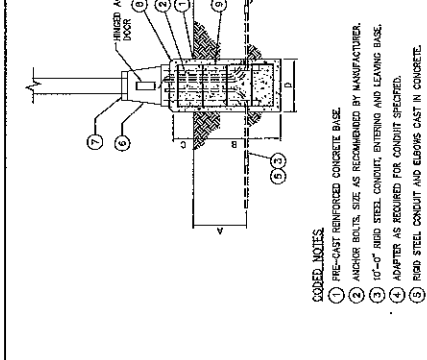
**2 HANDHOLE - DETAIL**  
 NOT TO SCALE

**NOTES:**  
 1. PROVIDE HANDHOLE SIMILAR TO QUOTE #P07309001-PR7030A32.  
 2. PROVIDE ALL CONDUITS WITH A PULL ROPE.  
 3. REPLACE EXISTING SURFACE CONDITIONS IN KIND TO INCLUDE, BUT NOT LIMITED TO, CONCRETE, CRUSHED STONE, SELECT GRAVEL, ASPHALT, CONCRETE, TOPSOIL, AND GRASS.



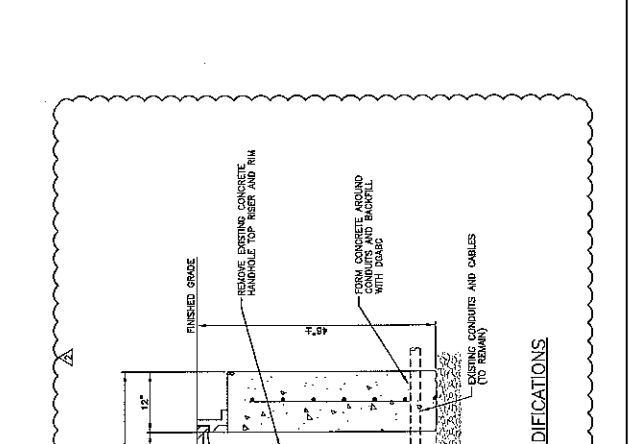
**4 TYPICAL CONCRETE-ENCASED CONDUIT DETAIL**  
 NOT TO SCALE

**NOTES:**  
 1. PROVIDE BASE SPACERS AND INTERMEDIATE SPACERS AT 12" ON CENTER.  
 2. PROVIDE WIRING IN CONDUITS AS INDICATED ON PLANS AND/OR ON READER'S DRAWING AND PROVIDE PULL WIRE IN EACH SPARE CONDUIT.  
 3. MINIMUM 48" RADIUS FOR CONDUIT BENDS.  
 4. PROVIDE 1/2" WIRE CONDUITS, MARKING TUBE LABELS, TAPERS, BUSED CONDUITS (INSTALL ABOVE THE ENTIRE LENGTH OF THE DUCT/BANK), HIGH VOLTAGE CABLE, AND SLIP MARKING TUBE LABELS, COMMUNICATION CONDUIT (INSTALL ABOVE THE ENTIRE LENGTH OF THE DUCT/BANK).  
 5. UNDER PAVED AREAS ENCASE CONDUITS WITH 3" COVER. ALL SIDES 4000 PSI CONCRETE. THE SLOPE OF DUCT/BANK SHALL BE LIMITED TO 2% UNPAVED SAND CONCRETE. THE SLOPE OF DUCT/BANK SHALL BE LIMITED TO 5% UNPAVED SAND CONCRETE. 3" UNDER NON-PAVED AREAS.  
 6. REPLACE EXISTING SURFACE CONDITIONS IN KIND TO INCLUDE, BUT NOT LIMITED TO, CONCRETE, CRUSHED STONE, SELECT GRAVEL, ASPHALT, TOPSOIL, GRASS, ETC. REPLACE SELECT GRAVEL IN 6' LPTS. COMPACT EACH FLAGMENT.  
 7. CONDUIT SIZE AND QUANTITY AS INDICATED ON PLANS AND/OR ON SCHEDULES.



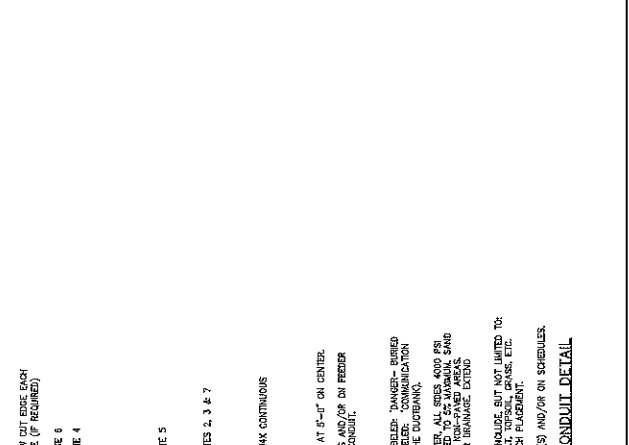
**1 LIGHT POLE BASE**  
 NOT TO SCALE

**NOTES:**  
 1. PRE-CAST REINFORCED CONCRETE BASE.  
 2. ANCHOR BOLTS, SIZE AS RECOMMENDED BY MANUFACTURER.  
 3. 10" O.D. RIBBON STEEL CONDUIT, ENTENDING AND LEAVING BASE.  
 4. ADAPTER AS REQUIRED FOR CONDUIT SPECIFIED.  
 5. RIBBON STEEL CONDUIT AND ELBOWS CAST IN CONCRETE.  
 6. TRANSFORMER BREAKWAY BASE SIMILAR TO UNKED LIGHTING STANDARD PFR-17 COLOR TO MATCH POLE.  
 7. POLEBASE COVER.  
 8. 1/2" x 45 CHAMFER  
 9. #5 REBAR SPACED 12" ON CENTER HORIZONTALLY AND (#5) REBAR VERTICALLY.  
 10. 3" MIN. COVER.



**ELECTRICAL HANDHOLE MODIFICATIONS**  
 N.T.S.

**NOTES:**  
 1. PROVIDE HANDHOLE SIMILAR TO QUOTE #P07309001-PR7030A32.  
 2. PROVIDE ALL CONDUITS WITH A PULL ROPE.  
 3. REPLACE EXISTING SURFACE CONDITIONS IN KIND TO INCLUDE, BUT NOT LIMITED TO, CONCRETE, CRUSHED STONE, SELECT GRAVEL, ASPHALT, CONCRETE, TOPSOIL, AND GRASS.



**4 TYPICAL CONCRETE-ENCASED CONDUIT DETAIL**  
 NOT TO SCALE

**NOTES:**  
 1. PROVIDE BASE SPACERS AND INTERMEDIATE SPACERS AT 12" ON CENTER.  
 2. PROVIDE WIRING IN CONDUITS AS INDICATED ON PLANS AND/OR ON READER'S DRAWING AND PROVIDE PULL WIRE IN EACH SPARE CONDUIT.  
 3. MINIMUM 48" RADIUS FOR CONDUIT BENDS.  
 4. PROVIDE 1/2" WIRE CONDUITS, MARKING TUBE LABELS, TAPERS, BUSED CONDUITS (INSTALL ABOVE THE ENTIRE LENGTH OF THE DUCT/BANK), HIGH VOLTAGE CABLE, AND SLIP MARKING TUBE LABELS, COMMUNICATION CONDUIT (INSTALL ABOVE THE ENTIRE LENGTH OF THE DUCT/BANK).  
 5. UNDER PAVED AREAS ENCASE CONDUITS WITH 3" COVER. ALL SIDES 4000 PSI CONCRETE. THE SLOPE OF DUCT/BANK SHALL BE LIMITED TO 2% UNPAVED SAND CONCRETE. THE SLOPE OF DUCT/BANK SHALL BE LIMITED TO 5% UNPAVED SAND CONCRETE. 3" UNDER NON-PAVED AREAS.  
 6. REPLACE EXISTING SURFACE CONDITIONS IN KIND TO INCLUDE, BUT NOT LIMITED TO, CONCRETE, CRUSHED STONE, SELECT GRAVEL, ASPHALT, TOPSOIL, GRASS, ETC. REPLACE SELECT GRAVEL IN 6' LPTS. COMPACT EACH FLAGMENT.  
 7. CONDUIT SIZE AND QUANTITY AS INDICATED ON PLANS AND/OR ON SCHEDULES.