

Osbornville School Change of Use

#1- See attached document.

#2- Principal Office/ Conference Room with overhead projector.

#3- No work to be done.

#4- See attached sketch.

#5- A. 32' x 24' (786 sq. ft.)

B. 10' ceilings Total gross area: 7680 sq. ft.

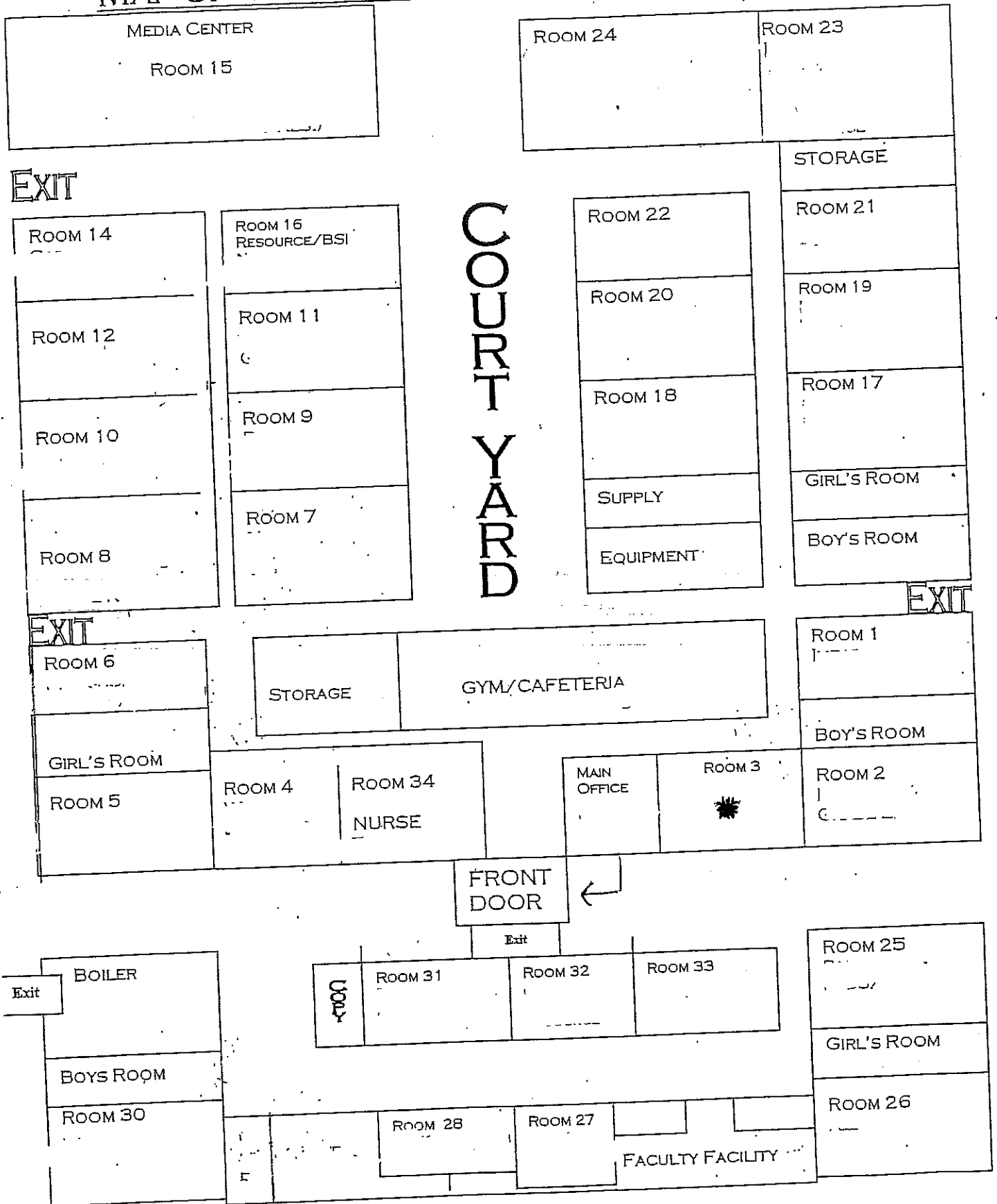
C. Flooring: VCT tile.

D. Foot candles of light: 50

E. Door hardware: Schlage lever security handles.

F. Number of occupants : Principal

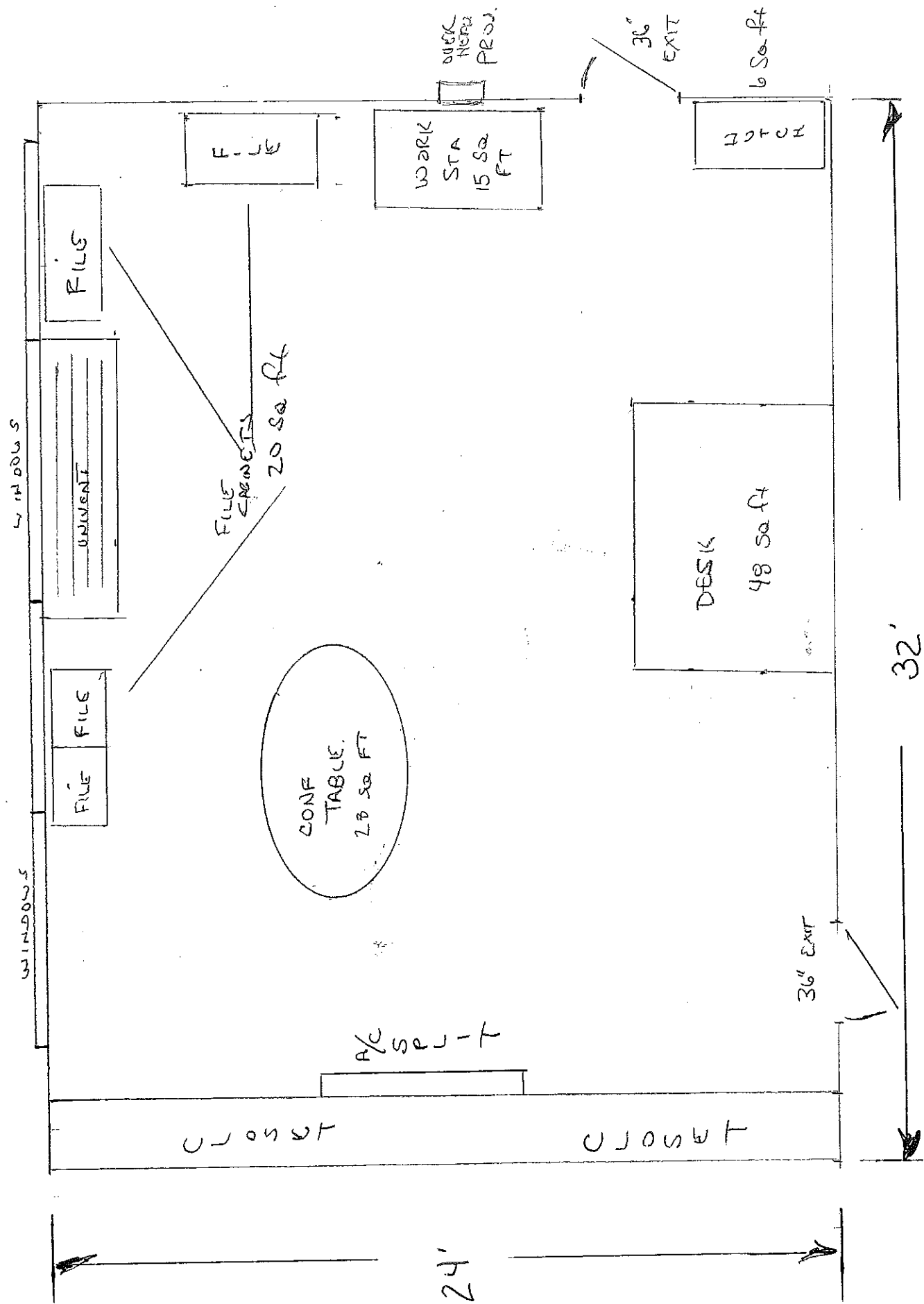
MAP OF OSBORNVILLE ELEMENTARY SCHOOL



LOWER LEVEL

DRUM PT. RD

1000 W. MINI RD
DRUM POINT RD



Room #3 ON
FLOOR PLAN.

HALLWAY